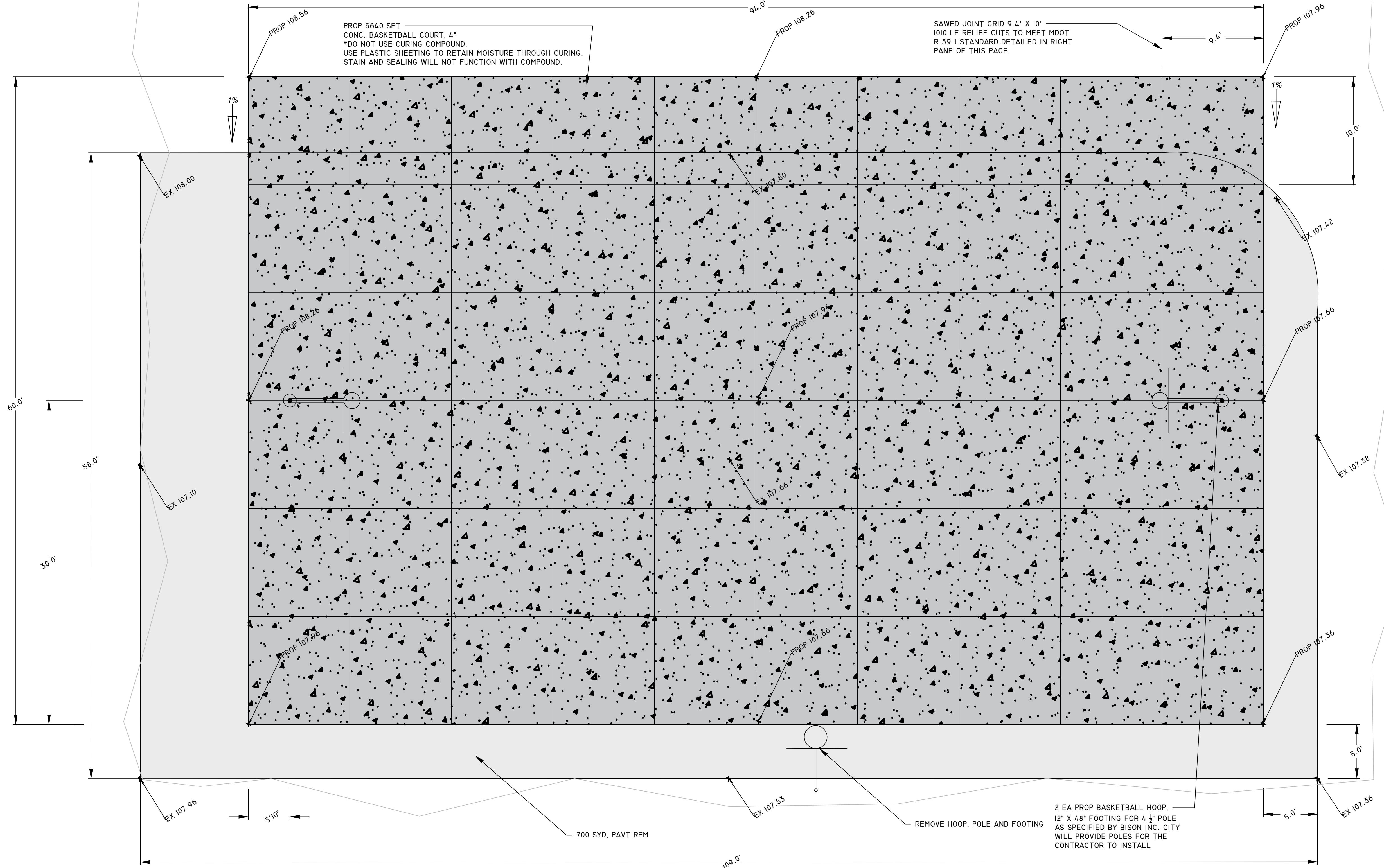


PROPOSED REMOVALS AND WHITE CONCRETE PAD

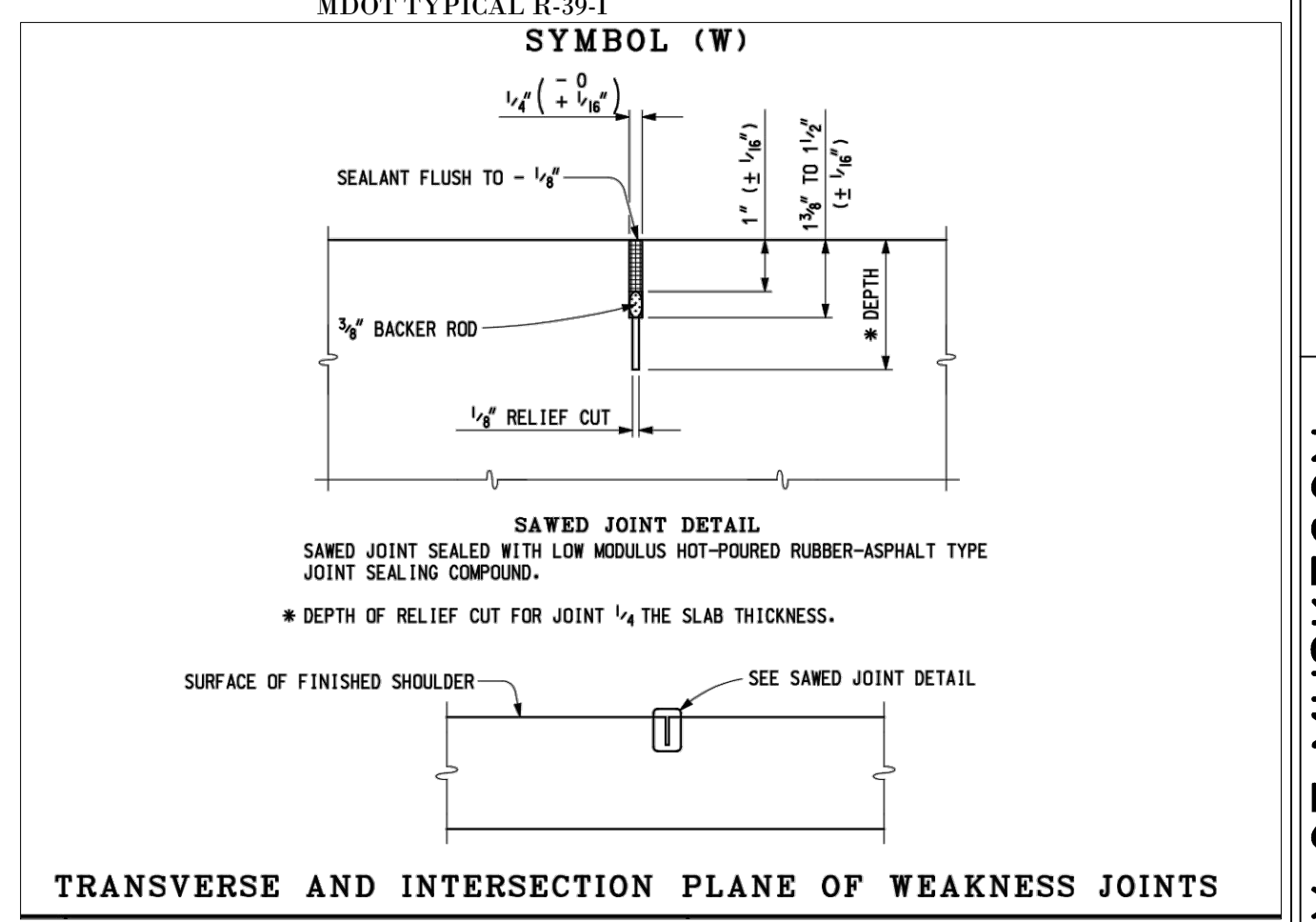
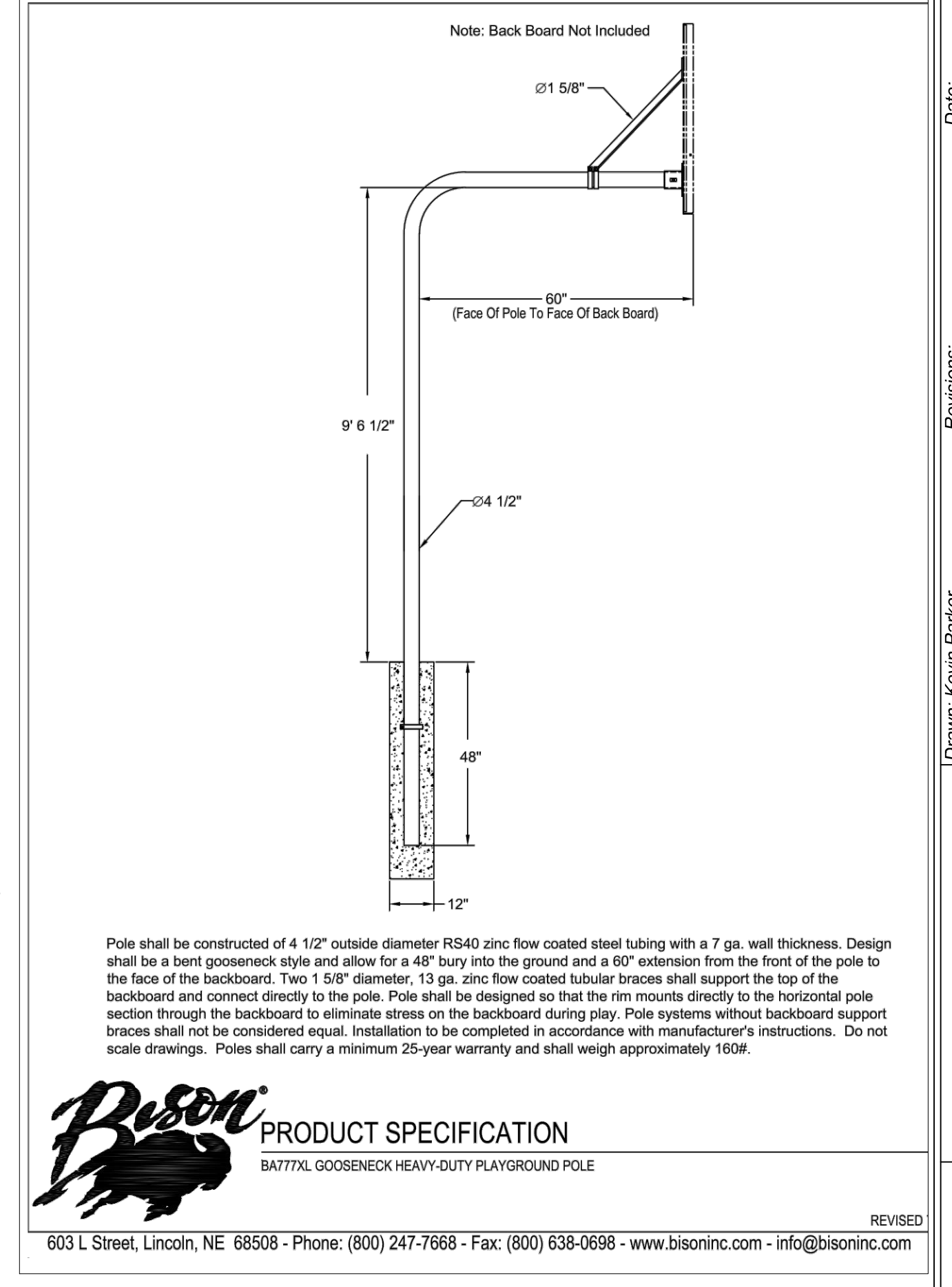
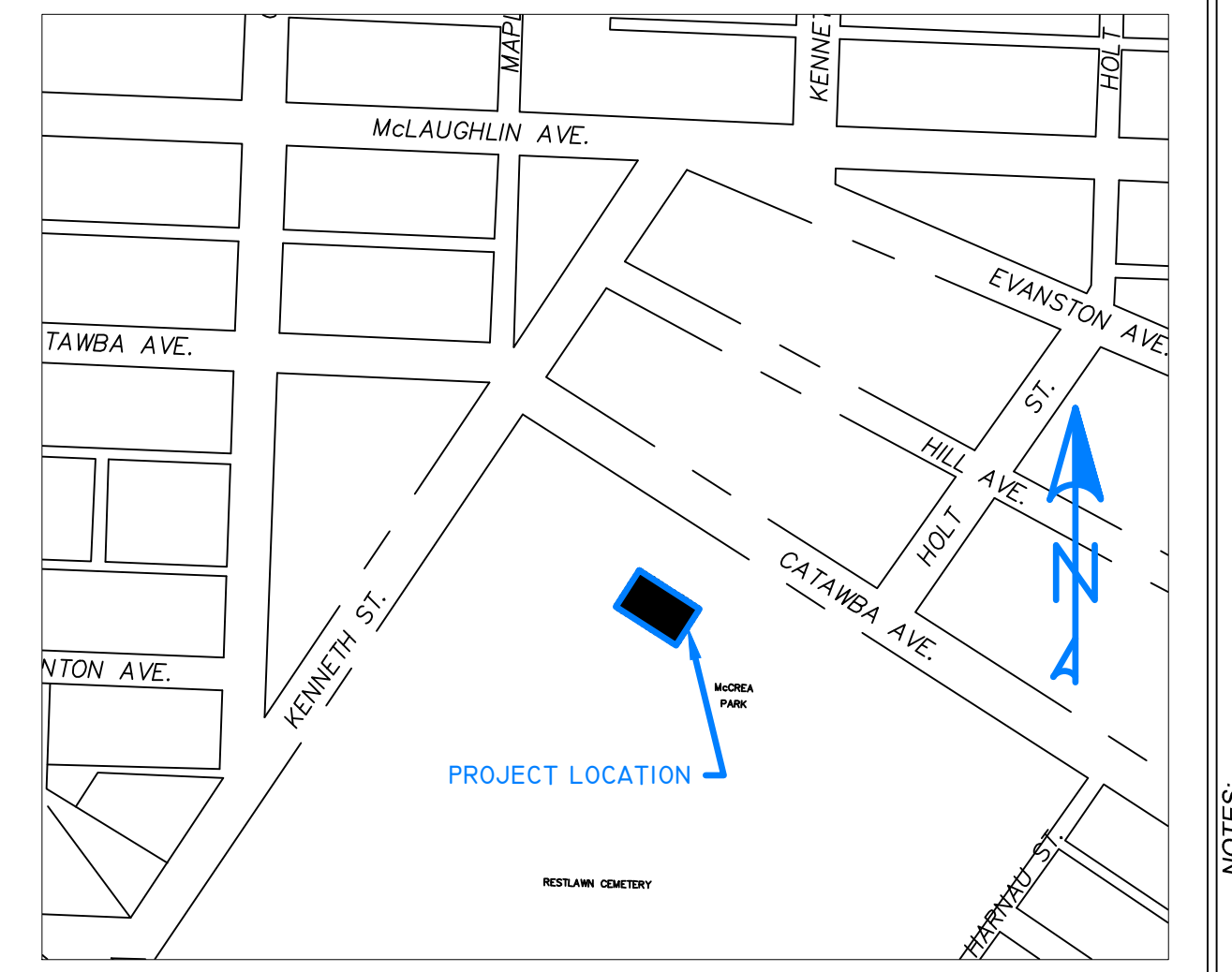
PROP 320 SYD TOPSOIL SURFACE, FURN. 4 INCH
PROP 320 SYD HYDROSEEDING
BACKFILL TO CONCRETE AND FEATHER
OUT TO EXISTING GRADE

PROP 5640 SFT
CONC. BASKETBALL COURT, 4"
*DO NOT USE CURING COMPOUND.
USE PLASTIC SHEETING TO RETAIN MOISTURE THROUGH CURING.
STAIN AND SEALING WILL NOT FUNCTION WITH COMPOUND.

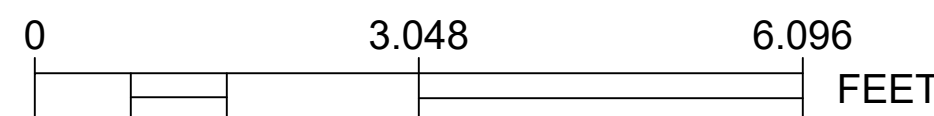
SAWED JOINT GRID 9' 4" X 10'
1010 LF RELIEF CUTS TO MEET MDOT
R-39-1 STANDARD. DETAILED IN RIGHT
PANE OF THIS PAGE.



2 EA PROP BASKETBALL HOOP,
12" X 48" FOOTING FOR 4 1/2" POLE
AS SPECIFIED BY BISON INC. CITY
WILL PROVIDE POLES FOR THE
CONTRACTOR TO INSTALL



QUANTITIES THIS SHEET		
DESCRIPTION	QUANTITY	UNIT
PAVT REM	700	SYD
CONC. 6 INCH	5640	SFT
BA777XL GOOSENECK HEAVY-DUTY PLAYGROUND POLE	2	EA
TOPSOIL SURFACE, FURN. 4 INCH	320	SYD
HYDROSEEDING	320	SYD



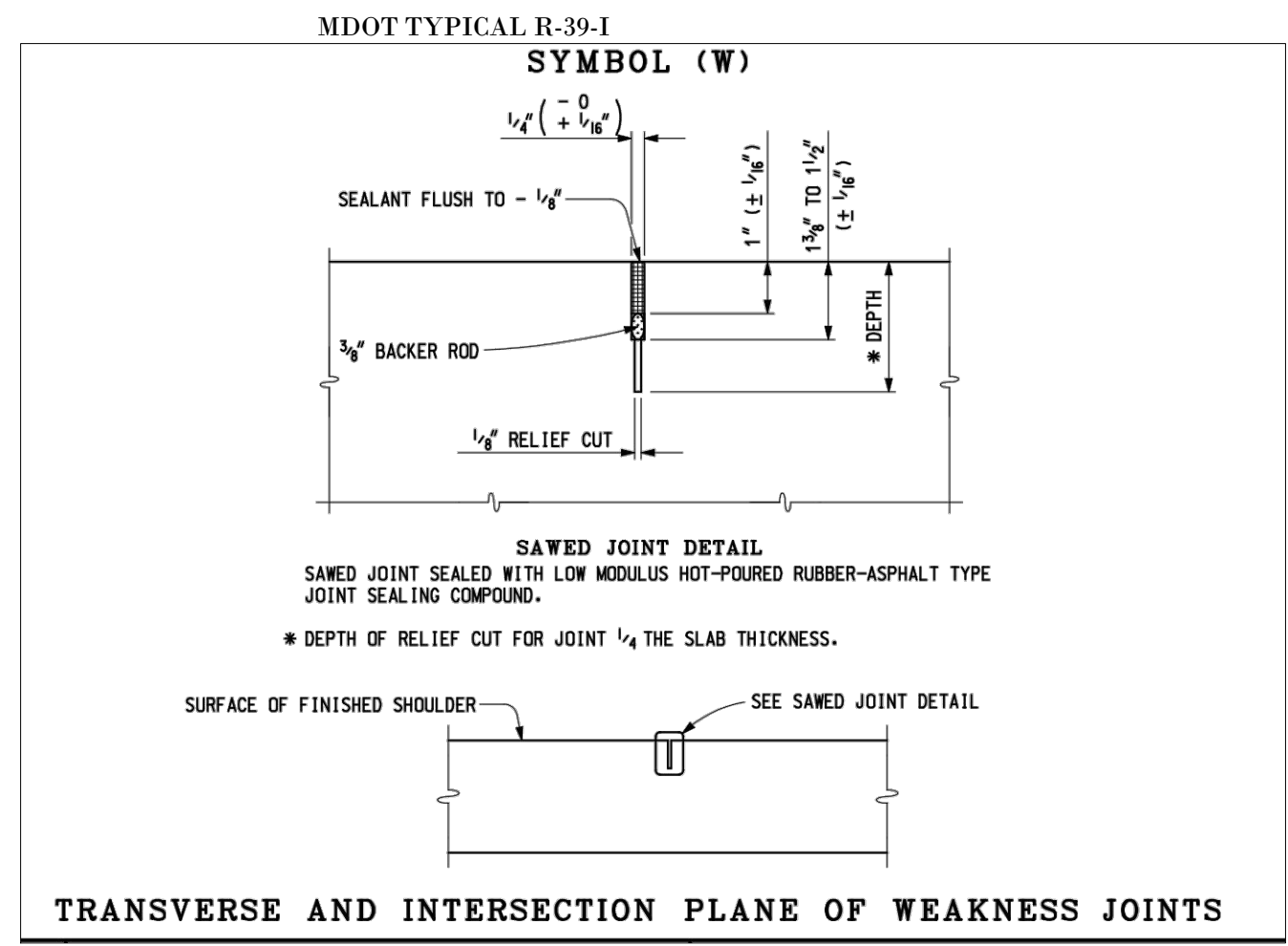
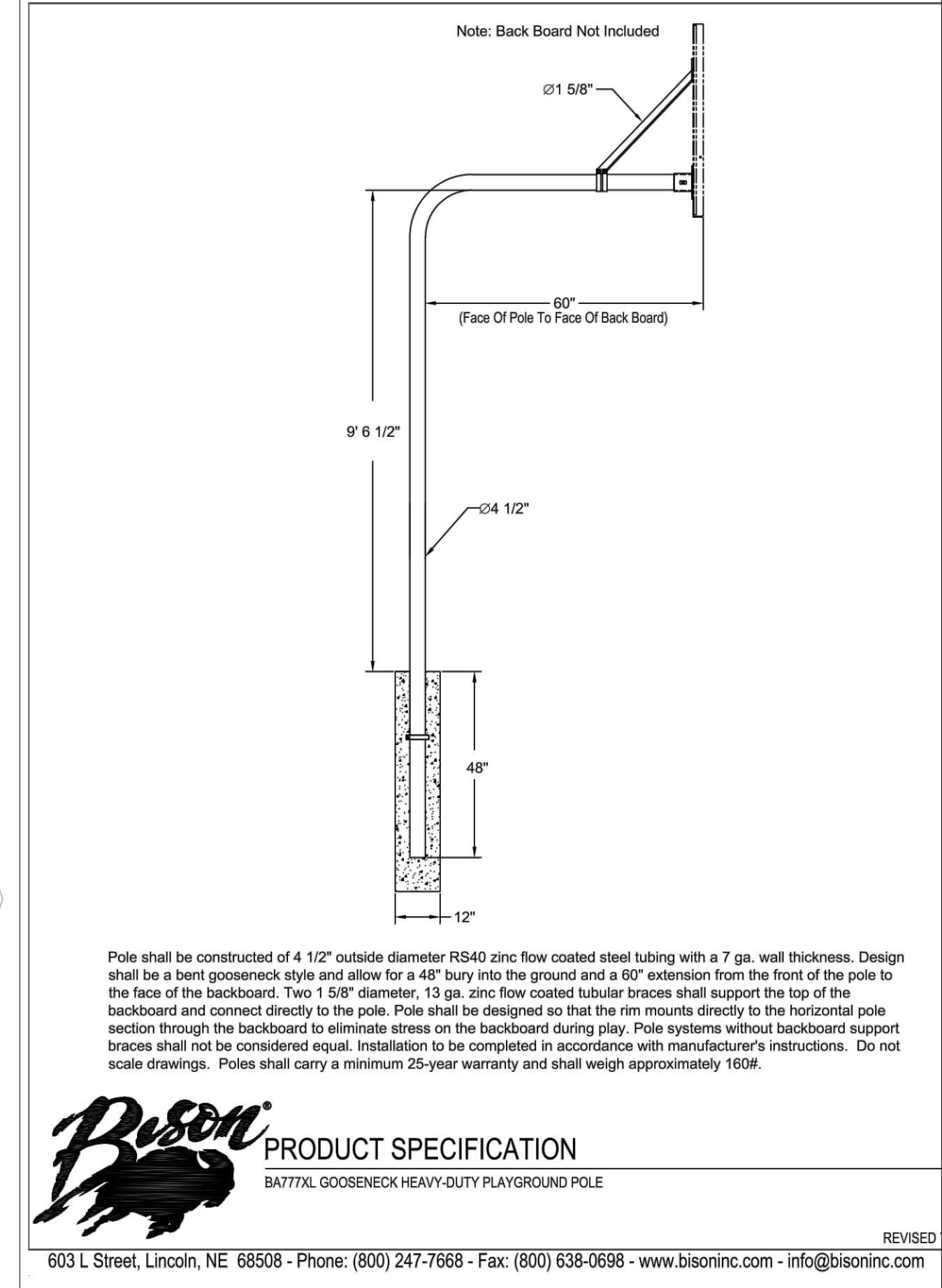
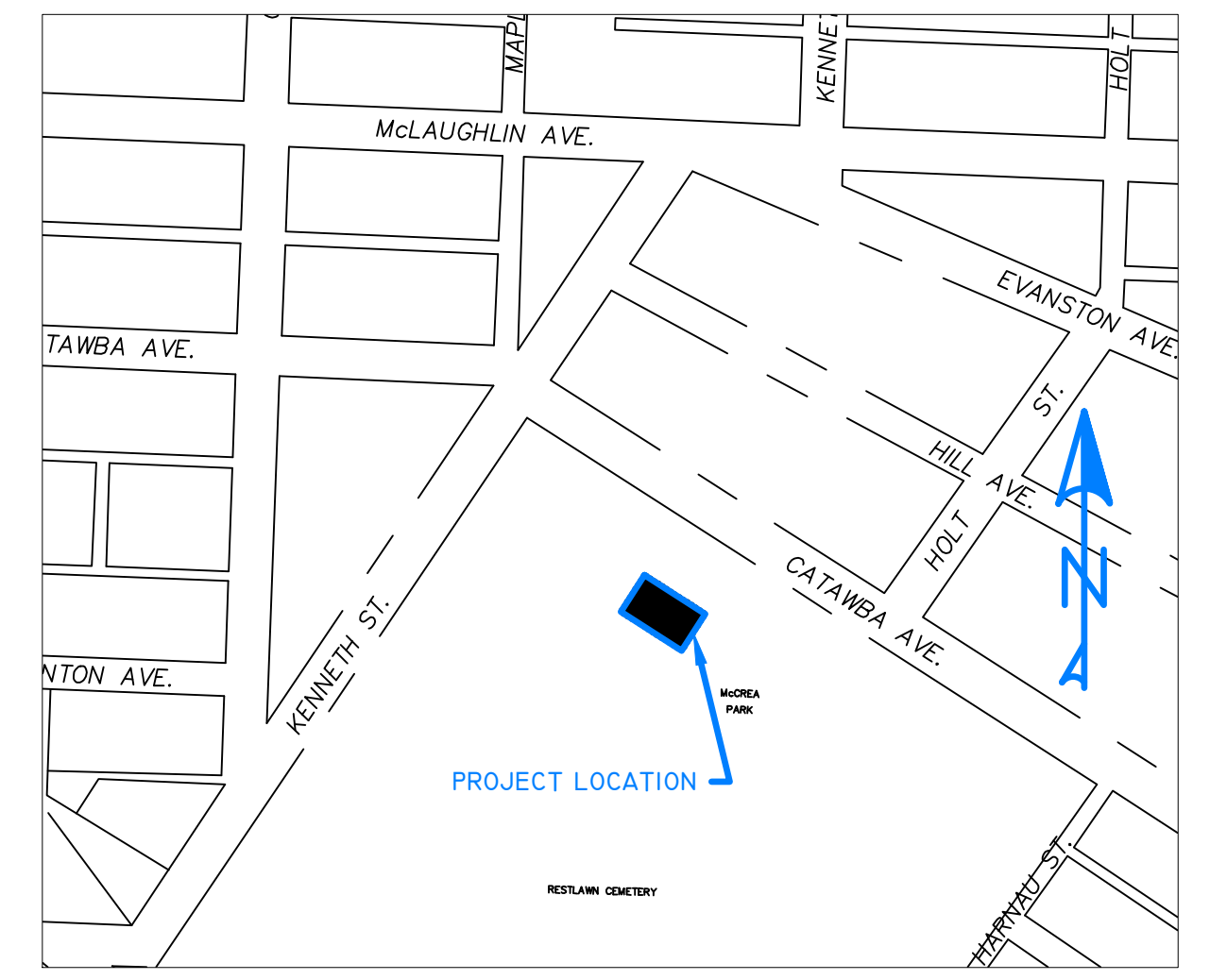
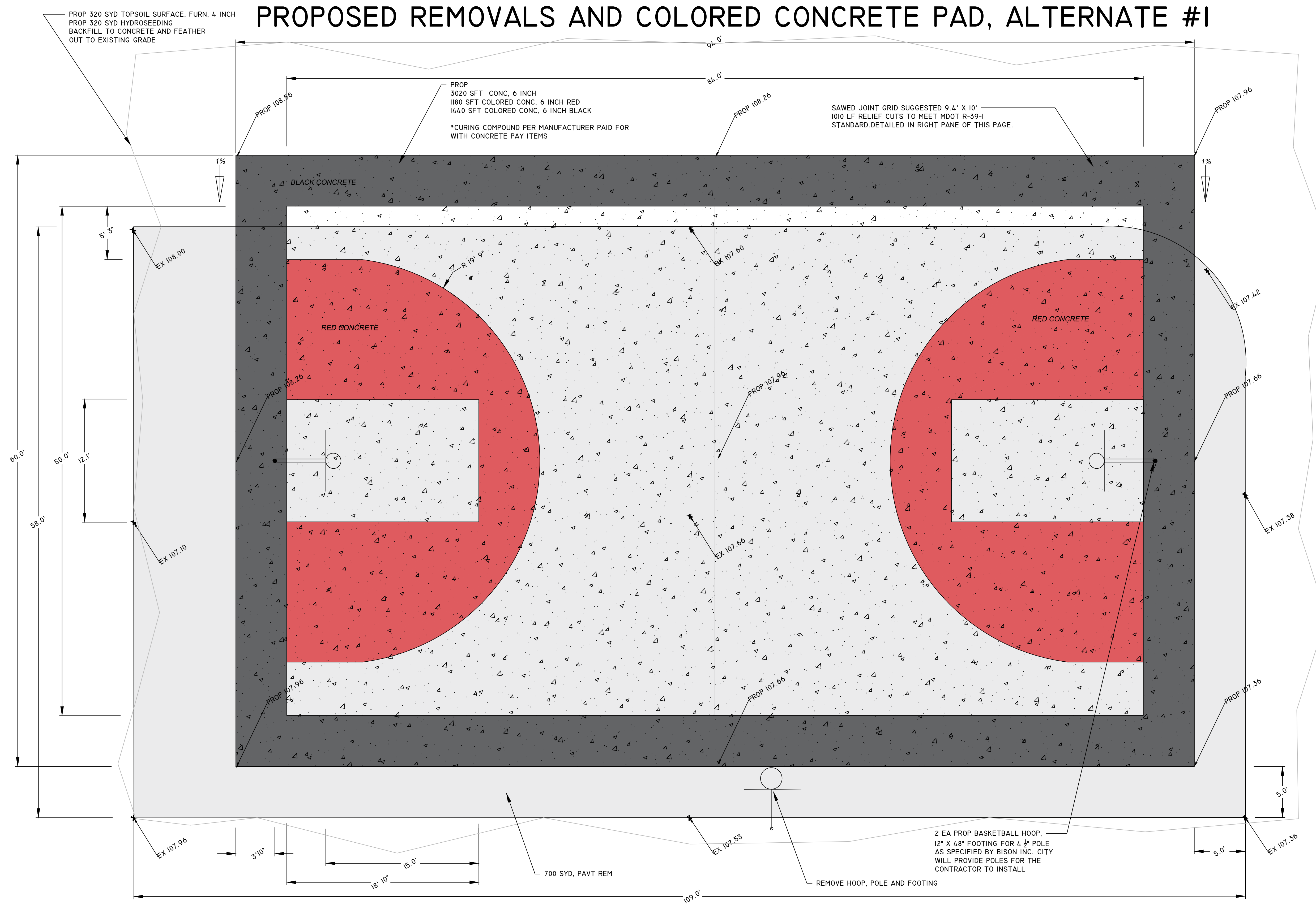
STANDARD: Saw joints in two stages, in accordance with the following:

- Place a relief cut directly over the center of the load transfer assembly or over the preformed joint filler. Make the relief cut after the concrete hardens and will not excessively ravel or spall, but before random cracks develop in the concrete pavement. Immediately stop sawing if sawing operation causes excessive raveling or spalling, and continue to monitor the concrete hardness before resuming sawing operations. Do not allow traffic over the expansion joint relief cuts.
- Center the joint groove over the relief cut. Adjust the groove width to compensate for change in the relief cut due to pavement contraction. Immediately stop sawing if sawing operation causes excessive raveling or spalling, and continue to monitor the concrete hardness before resuming sawing operations. Maintain the curing of the concrete near the joint, and if required, install the permanent joint sealant or place temporary cover material. Give second stage sawing of expansion joints priority over second stage contraction joint sawing, if higher pavement temperatures are forecast. If proposing an alternative method for sawing, submit a plan to the Engineer for approval. The Engineer will not allow spalling, raveling, and random cracks in the concrete pavement.

NOTES:
 Date:
 Revisions:
 1.
 2.
 3.
 Drawn: Kevin Panker
 Date: May 2021
 Checked:
 Date:

CITY OF MUSKOGON
 OFFICE OF THE CITY ENGINEER
 McCRAE BASKETBALL COURT
 01

PROPOSED REMOVALS AND COLORED CONCRETE PAD, ALTERNATE #1



QUANTITIES THIS SHEET		
DESCRIPTION	QUANTITY	UNIT
PAVT REM	700	SYD
CONC. 6 INCH	3020	SFT
COLORED CONC. 6 INCH RED	1180	SFT
COLORED CONC. 6 INCH BLACK	1140	SFT
BA777XL GOOSENECK HEAVY-DUTY PLAYGROUND POLE	2	EA
TOPSOIL SURFACE, FURN, 4 INCH	320	SYD
HYDROSEEDING	320	SYD

STANDARD: Saw joints in two stages, in accordance with the following:
a. Place a relief cut directly over the center of the load transfer assembly or over the prepared joint filler. Make the relief cut after the concrete hardens and will not excessively ravel or spall, but before random cracks develop in the concrete pavement. Immediately stop sawing if sawing operation causes excessive raveling or spalling, and continue to monitor the concrete hardness before resuming sawing operations.
b. operations. Do not allow traffic over the expansion joint relief cuts.
c. Center the joint groove over the relief cut. Adjust the groove width to compensate for change in the relief cut due to pavement contraction. Immediately stop sawing if sawing operation causes excessive raveling or spalling, and continue to monitor the concrete hardness before resuming sawing operations. Maintain the curing of the concrete near the joint, and if required, install the permanent joint sealant or place temporary cover material. Give second stage sawing of expansion joints priority over second stage contraction joint sawing, if higher pavement temperatures are forecast. If proposing an alternative method for sawing, submit a plan to the Engineer for approval. The Engineer will not allow spalling, raveling, and random cracks in the concrete pavement.

NOTES:
Date:
Revisions:
1.
2.
3.
Drawn: Kevin Pankar
Date: May 2021
Checked:
Date:
CITY OF MUSKEGON
OFFICE OF THE CITY ENGINEER
McCrae Basketball Court
02